

Item No.: 12013001

Solar Ground Mounting Structure-
-Cement base (double poles)
Wind load: 30m/s~55m/s

➤ **Design criterion**

Basic Wind Pressure: 0.5-0.8 KN/m²

Panel size: 1650x992 mm 2x10 Portrait

Covered area : 3.6X10.3 M²

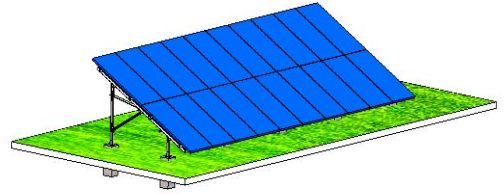
➤ **Product Introduction**

Product Material: Q235 (Hot-galvanized steel, thickness70um)

Fasten Material: Stainless steel (SS304)

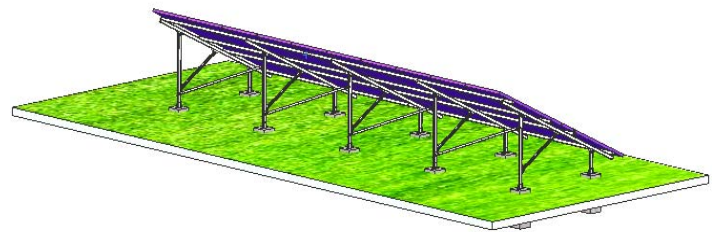
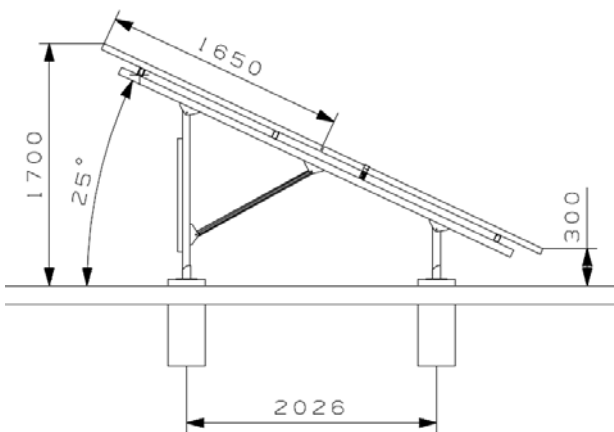
Angle: 15~45degree

The distance from lowest point of panel to ground:
300↔500 mm

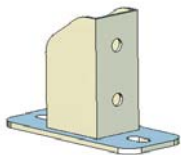


➤ **Product Characteristic**

- Double poles
- High strength structure
- ✧ Be suitable to ground power plant
- ✧ Be fit for sandy, loam and clay, etc
- ✧ Foundation bolt is pre-installed in the cement base



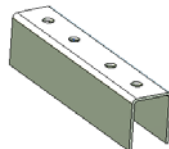
➤ **Components**



fastener



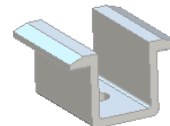
spin fastener



rail connector



square nut



upper clamp



end clamp

Room 1005, No. 939 JinQiao Road, Pudong, Shanghai China 200136

Tel: 61600231, 61600232, 61600233

Email: christina.rao@frontierack.com

www.frontierack.com